

SERIES: GSS-120W-xxK; GSS-150W-xxK

Model description :xx=CCT (30=3000K, 40=4000K, 50=5000K)

Item	Models	Input Voltage	Power Factor	Watt	Input Current	Weight
A	GSS-150W-xxK	120-277VAC	≥0.9	150W	1.8A Max.	6.5 KG
B	GSS-120W-xxK	120-277VAC		120W	1.5A Max.	6.5 KG

1. Introduction

- An internal power-factor-corrected LED driver allows it to be used from any nominal 100-277V, 277-480V 60Hz AC supply without any variation in light output.
- Suitable for use in the following locations:
 - Ambient Temp: -68~+104°F
 - Wet Locations

Note: Save these instructions for future reference.

2. Installation

Warning:

To avoid the risk of fire, explosion, or electric shock, this product should be installed, inspected, and maintained by a qualified electrician only, in accordance with all applicable electrical codes.

Warning:

To avoid electric shock:

- Be certain electrical power is OFF before and during installation and maintenance.
- Luminaire must be connected to a wiring system with an equipment-grounding conductor.

Warning:

To avoid explosion:

- Make sure the supply voltage is the same as the rated luminaire voltage.
- Do not install where the marked operating temperatures exceed the ignition temperature of the hazardous atmosphere.
- Do not operate in ambient temperatures above those indicated on the luminaire nameplate.

For supply connections use wire rated for at least 212°F.

Installation Steps:

1. Mount throughout the roof

1. Use the existing hole on the roof or open a 1 3/4" hole. See fig. 1.
2. Put the back thread through the hole, secure it by the gasket, plate and hex head locknut. Make sure there is no gap between the plate and roof. See fig. 2.
3. Fasten the small screw on the side of the locknut to prevent from loosen. If the mounting surface was not flat, sealant should be applied surround the plate and each screws. See fig. 3.
4. Use a 3/4" conduit to lead out the wires. Connect the wiring to line wires, black-black, white-white and green-green.

2. Surface mount on junction box

1. Drill holes on the roof according to the dimensions on Fig. 4.
2. Remove the threaded adaptor from the back of fixture. See Fig. 5. Connect the wiring to line wires, black-black, white-white and green-green.
3. Secure the fixture to the roof by 4 screws. See Fig. 6.

3. Surface mount without junction box

1. Remove the threaded adaptor from the back of fixture. Drill holes on the roof according to the dimensions on Fig. 4.
2. Open the back plate first, pull the wires back and through out from the 1/2" NPT threaded hole. Secure the fixture to the roof by 4 screws. See Fig. 6.
3. Connect the wiring to line wires, black-black, white-white and green-green.
4. Sealant should be applied surround the 1/2" hole.

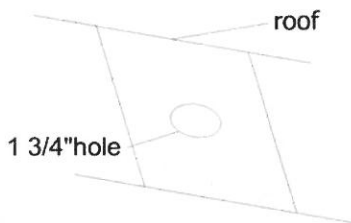


Fig. 1

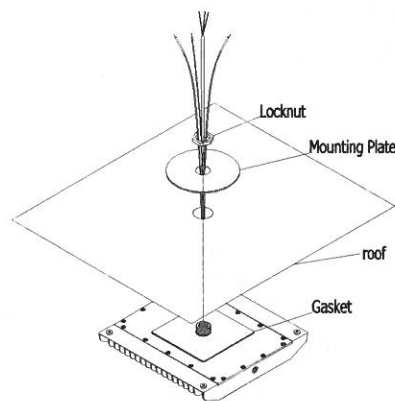


Fig. 2

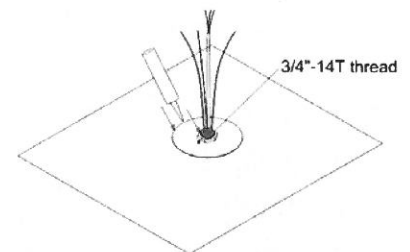


Fig. 3

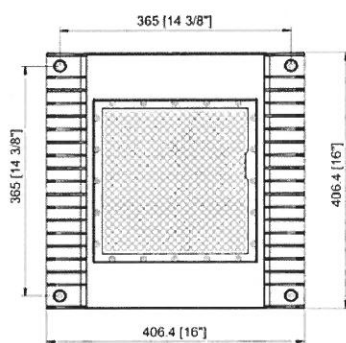


Fig. 4

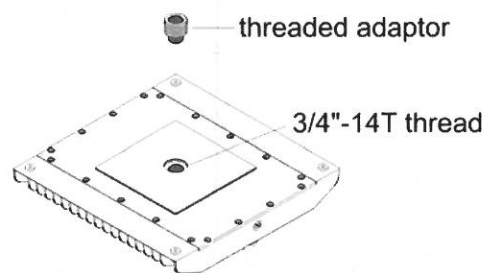


Fig. 5

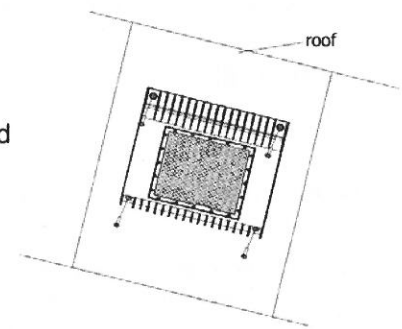


Fig. 6

After installation, please

- check whether the lighting fixture is firmly fixed.
- check whether wires are connected correctly.

At last, turn on the power, and check if the lighting fixture works well. If not, please turn off the power and contact with local dealer.

Warning: the luminaire shall be installed by qualified electrician.